

A S S E S S M E N T

OTAX

MAP

OF THE

 **BOROUGH OF ROOSEVELT** 

MONMOUTH COUNTY, NEW JERSEY

2022

*ADAMS, REHMANN & HEGGAN*

PROFESSIONAL ENGINEERS, LAND SURVEYORS & PLANNERS

(609) 561-0482 p (609) 567-8909 f

215 BELLEVUE AVENUE

HAMMONTON, NEW JERSEY 08037

# KEY MAP

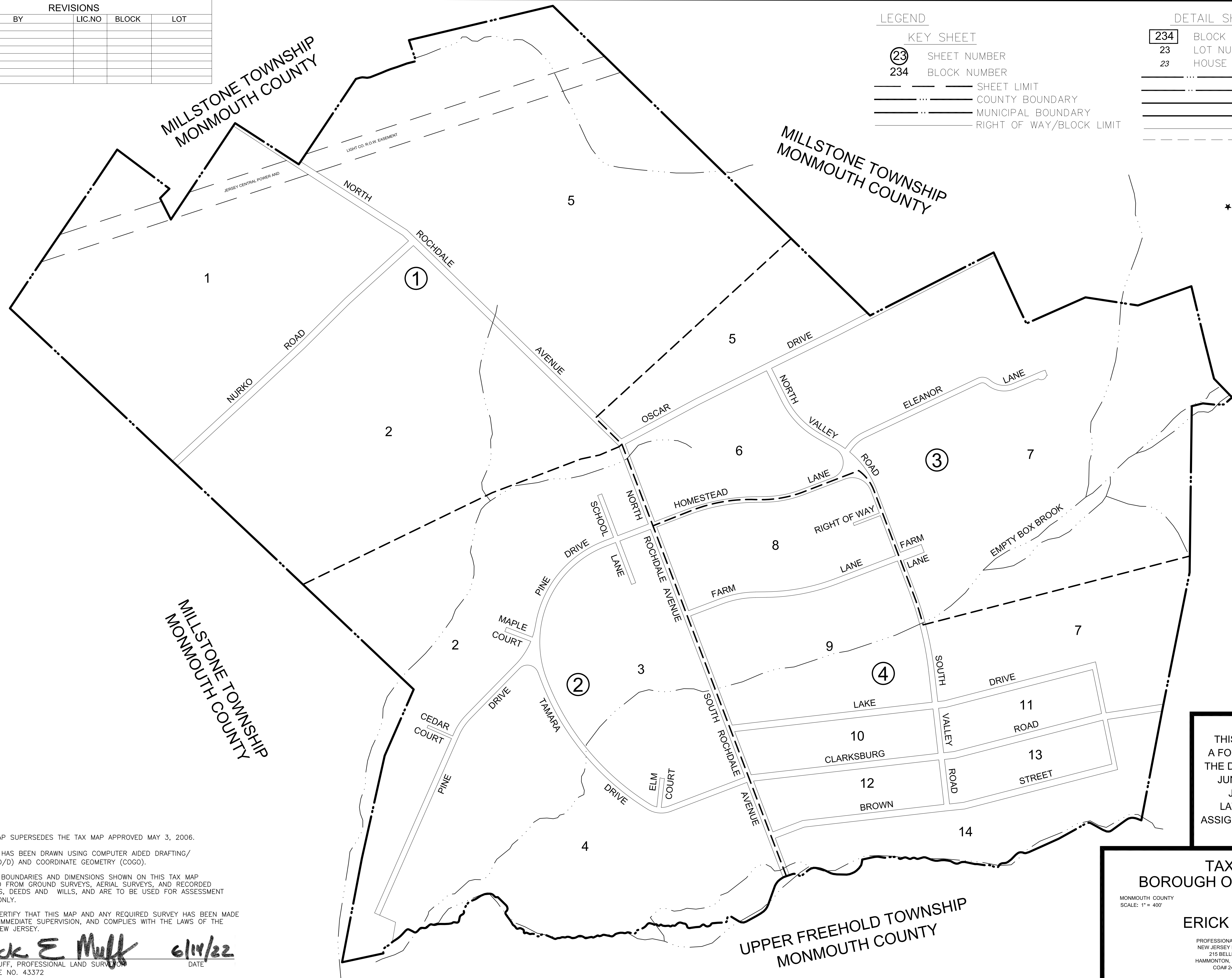
REVISIONS				
DATE	BY	LIC.NO	BLOCK	LOT

### LEGEND

- KEY SHEET**
- ②③ SHEET NUMBER
  - 234 BLOCK NUMBER
  - SHEET LIMIT
  - COUNTY BOUNDARY
  - MUNICIPAL BOUNDARY
  - RIGHT OF WAY/BLOCK LIMIT

### DETAIL SHEET

- 234 BLOCK NUMBER
- 23 LOT NUMBER
- 23 HOUSE ADDRESS
- COUNTY BOUNDARY
- MUNICIPAL BOUNDARY
- RIGHT OF WAY
- BLOCK LIMIT
- PARCEL LINE
- MATCH LINE



THIS MAP HAS BEEN GIVEN A FORMAL CERTIFICATION BY THE DIVISION OF TAXATION ON JUNE 14, 2022, SIGNED BY JESSICA LARNED AND LATOYA ROBERTSON AND ASSIGNED SERIAL NUMBER 1132

**TAX MAP  
BOROUGH OF ROOSEVELT**

MONMOUTH COUNTY SCALE: 1" = 400' NEW JERSEY DATE: JUNE 2022

**ERICK E. MUFF**

PROFESSIONAL LAND SURVEYOR  
NEW JERSEY LICENSE NO. 43372  
215 BELLEVUE AVENUE  
HAMMONTON, NEW JERSEY 08037  
COA# 24G27973300

TO SHOW CONDITIONS AS OF JUNE 1, 2022

THIS TAX MAP SUPERSEDES THE TAX MAP APPROVED MAY 3, 2006.

\* THIS SHEET HAS BEEN DRAWN USING COMPUTER AIDED DRAFTING/ DESIGN (CAD/D) AND COORDINATE GEOMETRY (COCO).

THE AREAS, BOUNDARIES AND DIMENSIONS SHOWN ON THIS TAX MAP ARE DERIVED FROM GROUND SURVEYS, AERIAL SURVEYS, AND RECORDED PLANS, MAPS, DEEDS AND WILLS, AND ARE TO BE USED FOR ASSESSMENT PURPOSES ONLY.

I HEREBY CERTIFY THAT THIS MAP AND ANY REQUIRED SURVEY HAS BEEN MADE UNDER MY IMMEDIATE SUPERVISION, AND COMPLIES WITH THE LAWS OF THE STATE OF NEW JERSEY.

*Erick E. Muff* 6/14/22  
ERICK E. MUFF, PROFESSIONAL LAND SURVEYOR DATE  
N.J. LICENSE NO. 43372

# KEY MAP

BLOCK SHEET
1
1 000
1 001
2
2 000
2 001
2 002
3 002
4 002
5
5 000
5 001
6 003
7
7 003
7 004
8 004
9 004
10 004
11 004
12 004
13 004
14 004
999

ROAD NAME	SHEET
.	002
.	004
BROWN STREET	004
CEDAR COURT	002
CLARKSBURG ROAD	004
DR	002
DRIVE	002
DRIVE	003
DRIVE	004
ELEANOR LANE	003
ELM COURT	002
FARM LANE	004
HOMESTEAD LANE	003
HOMESTEAD LANE	004
LAKE DRIVE	
LAKE DRIVE	004
LANE	003
MAPLE COURT	002
N ROCHDALE AVE	001
N ROCHDALE AVE	002
N ROCHDALE AVE	003
N ROCHDALE AVE	004
N VALLEY ROAD	003
NORTH ROCHDALE AVE	001
NORTH ROCHDALE AVE	002
NORTH ROCHDALE AVE	004
NORTH ROCHDALE AVENUE	
NORTH ROCHDALE AVENUE	000
NORTH ROCHDALE AVENUE	001
NORTH VALLEY RD	003
NORTH VALLEY ROAD	003
NORTH VALLEY ROAD	004
NURKO ROAD	
NURKO ROAD	000
NURKO ROAD	001
OF ROOSEVELT	
OSCAR DRIVE	003
PINE DRIVE	002
PRESERVE	003
RD	004
RD.	004
ROAD	000
ROAD	001
ROAD	004
ROCHDALE AVE	002
ROCHDALE AVE & OSCAR DR	001
ROCHDALE AVE.	001
ROCHDALE AVE.	004
ROCHDALE AVENUE	002
S ROCHDALE AVE	002
S ROCHDALE AVE	004
SCHOOL LANE	002
TAMARA DRIVE	002

**TAX MAP  
BOROUGH OF ROOSEVELT**

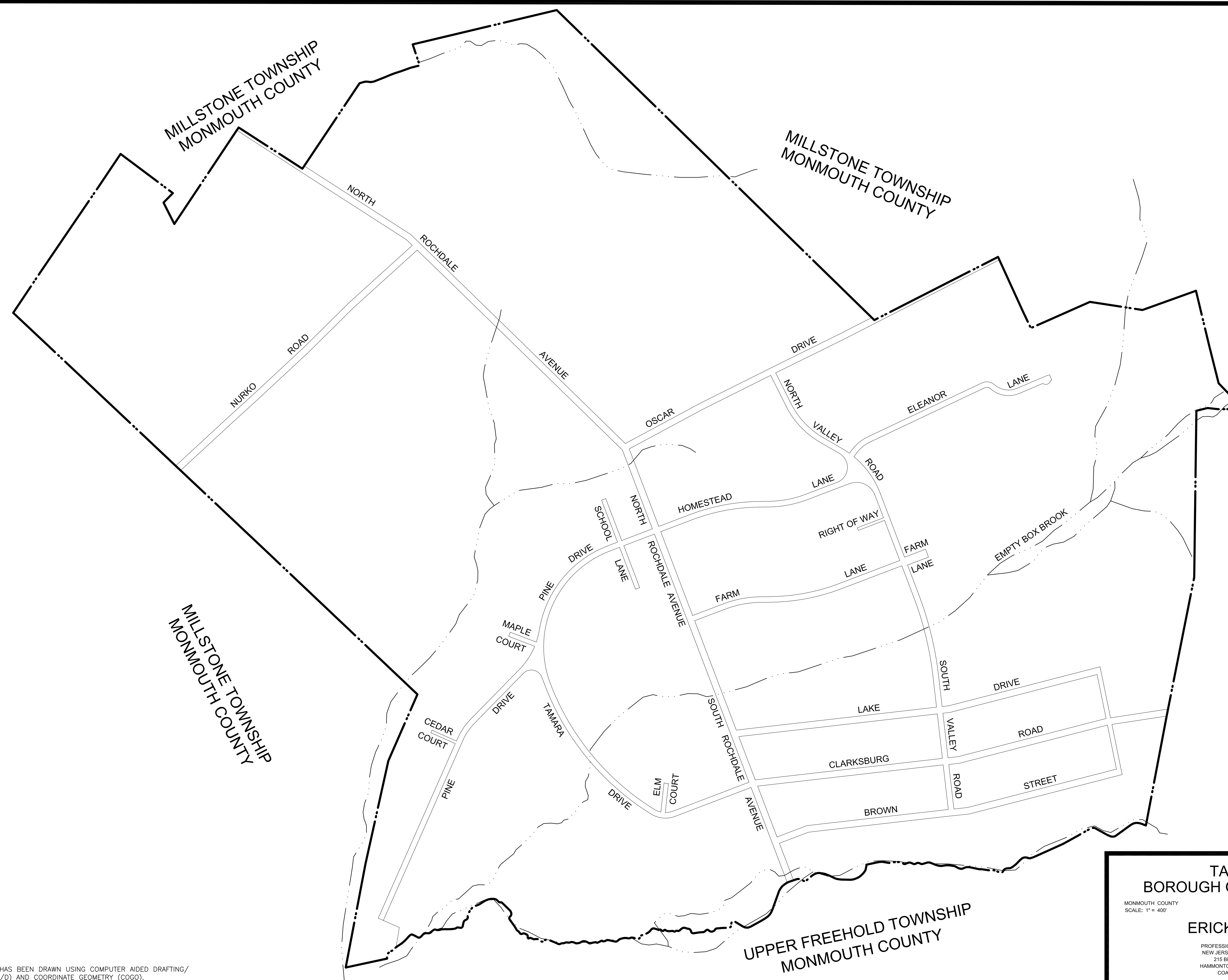
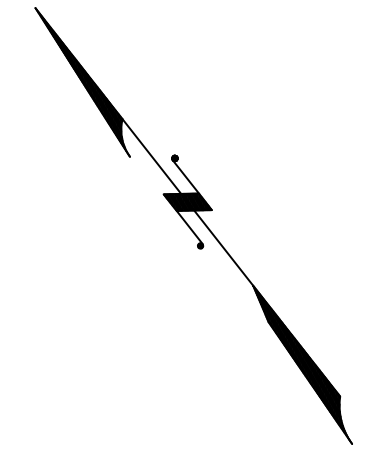
MONMOUTH COUNTY  
SCALE: NOT TO SCALE

NEW JERSEY  
DATE: JUNE 2022

**ERICK E. MUFF**

PROFESSIONAL LAND SURVEYOR  
NEW JERSEY LICENSE NO. 43372  
215 BELLEVUE AVENUE  
HAMMONTON, NEW JERSEY 08037  
COA# 24GA27973300

TO SHOW CONDITIONS AS OF JUNE 1, 2022



MILLSTONE TOWNSHIP  
MONMOUTH COUNTY

MILLSTONE TOWNSHIP  
MONMOUTH COUNTY

MILLSTONE TOWNSHIP  
MONMOUTH COUNTY

MILLSTONE TOWNSHIP  
MONMOUTH COUNTY

UPPER FREEHOLD TOWNSHIP  
MONMOUTH COUNTY

**TAX MAP**  
**BOROUGH OF ROOSEVELT**

MONMOUTH COUNTY  
 SCALE: 1" = 400'

NEW JERSEY  
 DATE: JUNE 2022

**ERICK E. MUFF**

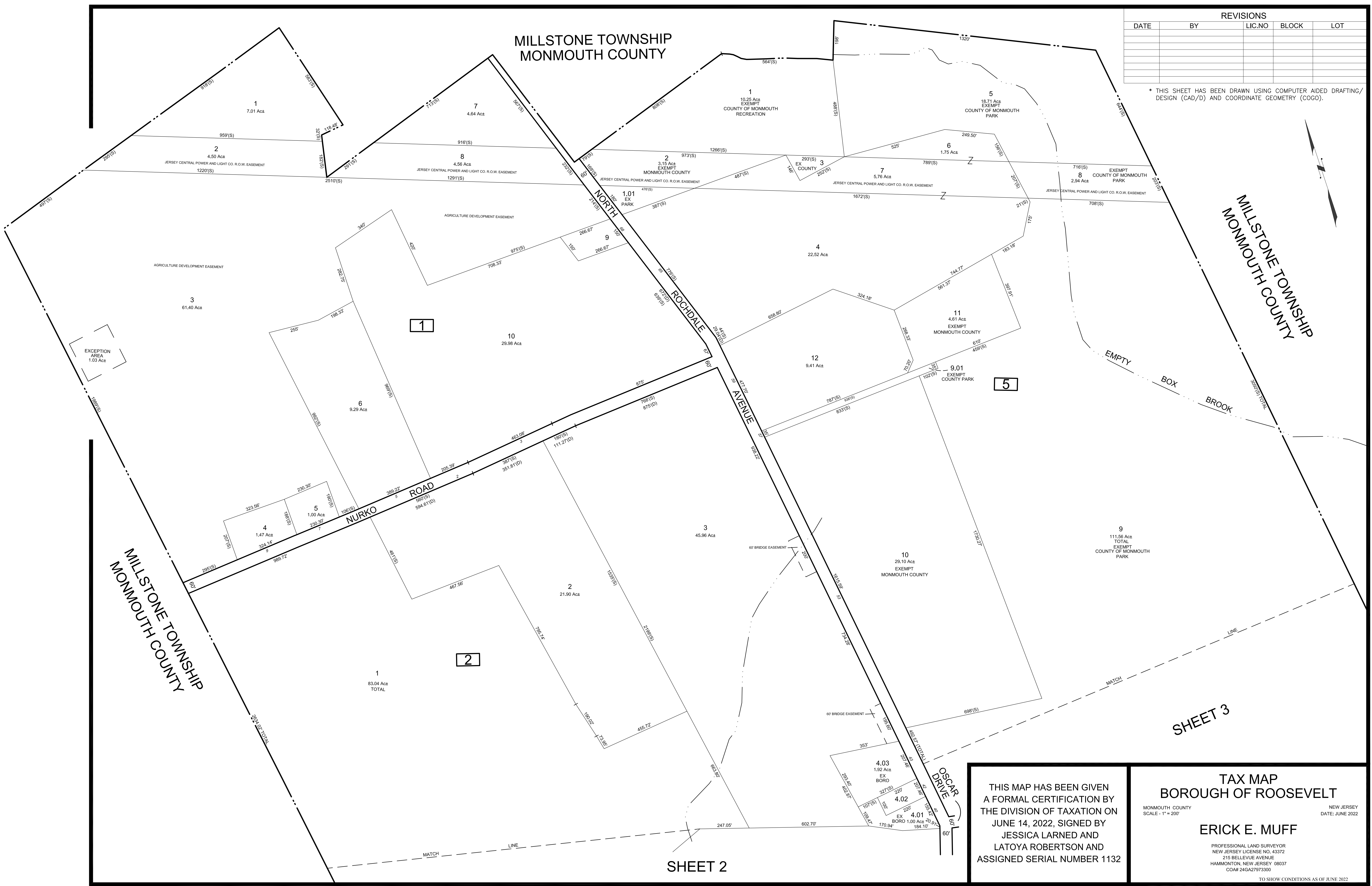
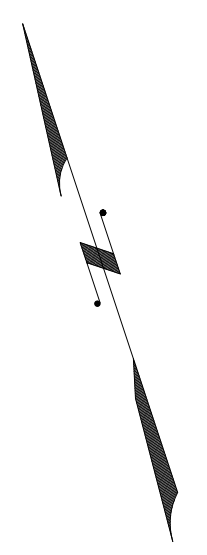
PROFESSIONAL LAND SURVEYOR  
 NEW JERSEY LICENSE NO. 43372  
 215 BELLEVUE AVENUE  
 HAMMONTON, NEW JERSEY 08037  
 COA# 24GA27973300

TO SHOW CONDITIONS AS OF JUNE 1, 2022

\* THIS SHEET HAS BEEN DRAWN USING COMPUTER AIDED DRAFTING/  
DESIGN (CAD/D) AND COORDINATE GEOMETRY (COGO).

REVISIONS				
DATE	BY	LIC.NO	BLOCK	LOT

\* THIS SHEET HAS BEEN DRAWN USING COMPUTER AIDED DRAFTING/ DESIGN (CAD/D) AND COORDINATE GEOMETRY (COGO).



SHEET 3

SHEET 2

THIS MAP HAS BEEN GIVEN A FORMAL CERTIFICATION BY THE DIVISION OF TAXATION ON JUNE 14, 2022, SIGNED BY JESSICA LARNED AND LATOYA ROBERTSON AND ASSIGNED SERIAL NUMBER 1132

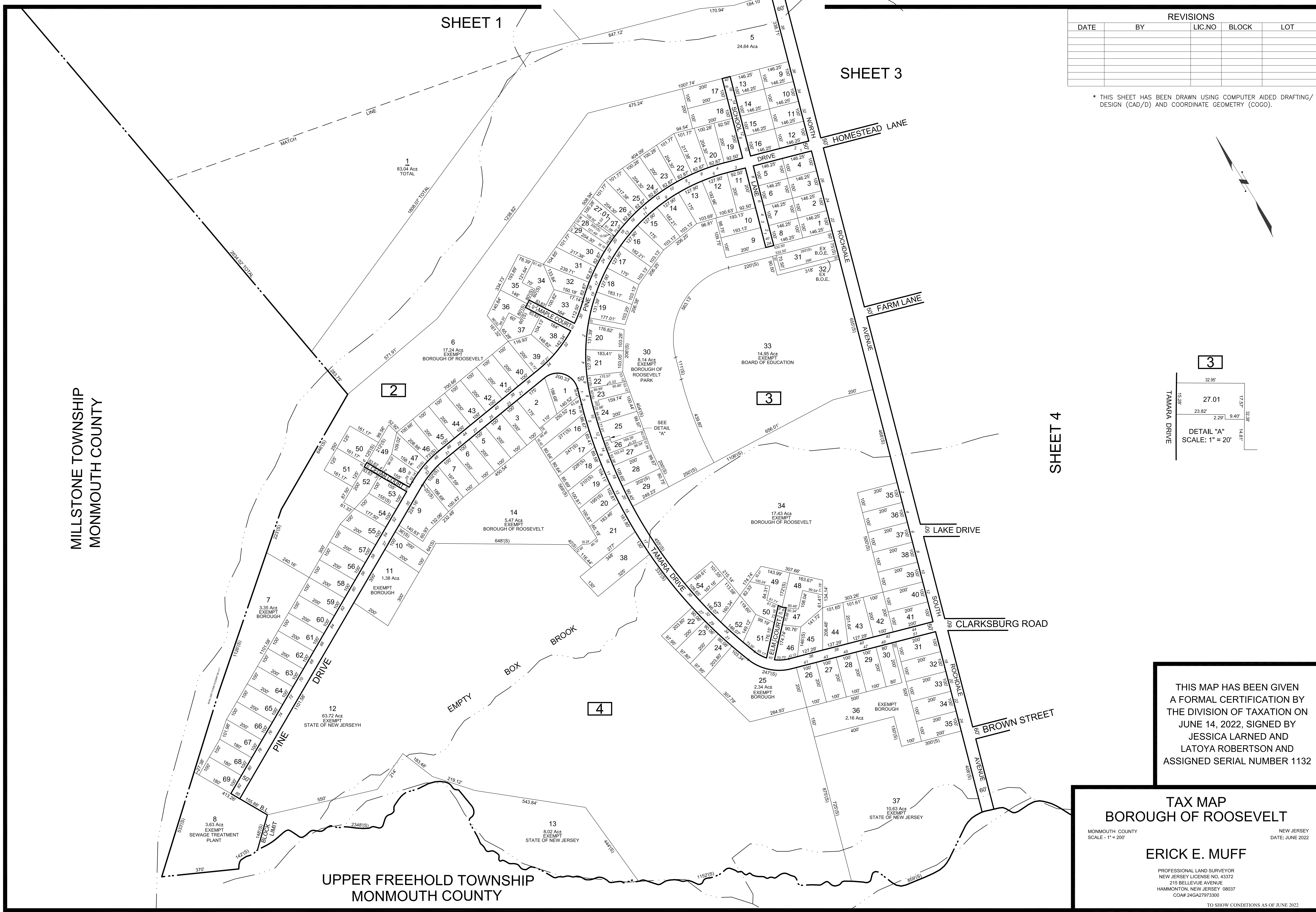
**TAX MAP**  
**BOROUGH OF ROOSEVELT**  
 MONMOUTH COUNTY  
 SCALE - 1" = 200'  
 NEW JERSEY  
 DATE: JUNE 2022  
**ERICK E. MUFF**  
 PROFESSIONAL LAND SURVEYOR  
 NEW JERSEY LICENSE NO. 43372  
 215 BELLEVUE AVENUE  
 HAMMONTON, NEW JERSEY 08037  
 COA# 24GA27973300  
 TO SHOW CONDITIONS AS OF JUNE 2022

SHEET 1

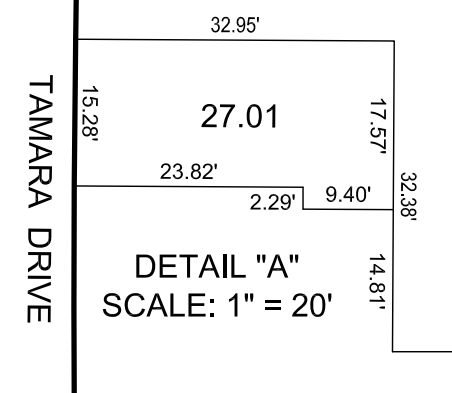
SHEET 3

REVISIONS				
DATE	BY	LIC.NO	BLOCK	LOT

\* THIS SHEET HAS BEEN DRAWN USING COMPUTER AIDED DRAFTING/ DESIGN (CAD/D) AND COORDINATE GEOMETRY (COGO).



3



SHEET 4

THIS MAP HAS BEEN GIVEN A FORMAL CERTIFICATION BY THE DIVISION OF TAXATION ON JUNE 14, 2022, SIGNED BY JESSICA LARNED AND LATOYA ROBERTSON AND ASSIGNED SERIAL NUMBER 1132

**TAX MAP  
BOROUGH OF ROOSEVELT**

MONMOUTH COUNTY NEW JERSEY  
SCALE - 1" = 20' DATE: JUNE 2022

**ERICK E. MUFF**

PROFESSIONAL LAND SURVEYOR  
NEW JERSEY LICENSE NO. 43372  
215 BELLEVUE AVENUE  
HAMMONTON, NEW JERSEY 08037  
COA# 24G427973300

TO SHOW CONDITIONS AS OF JUNE 2022

SHEET 1

MILLSTONE TOWNSHIP  
MONMOUTH COUNTY

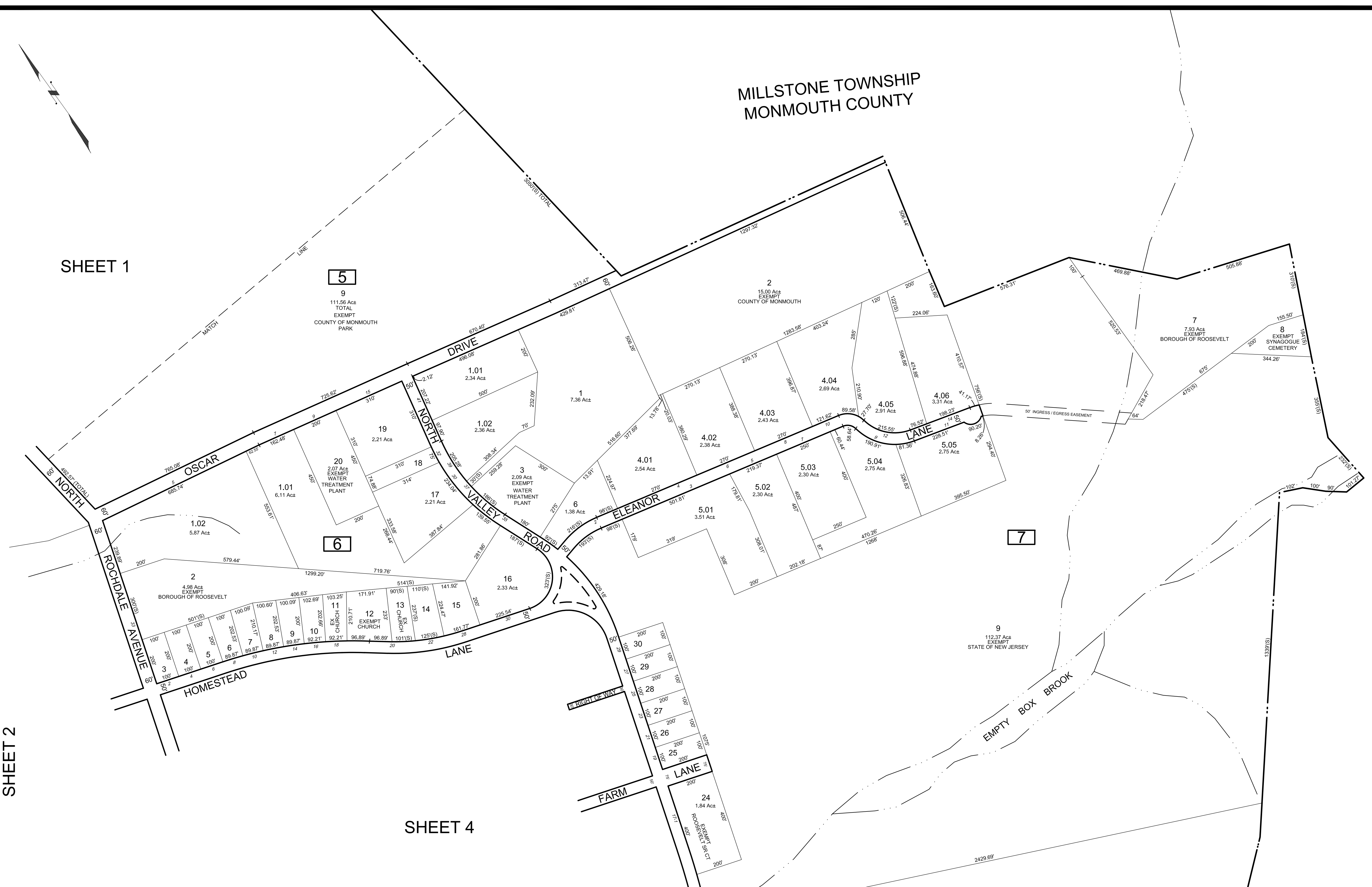
5

9  
111.58 Ac±  
TOTAL  
EXEMPT  
COUNTY OF MONMOUTH  
PARK

2  
15.00 Ac±  
EXEMPT  
COUNTY OF MONMOUTH

7  
7.93 Ac±  
EXEMPT  
BOROUGH OF ROOSEVELT

8  
EXEMPT  
SYNAGOGUE  
CEMETERY



MILLSTONE TOWNSHIP  
MONMOUTH COUNTY

SHEET 2

SHEET 4

SHEET 4

REVISIONS				
DATE	BY	LIC.NO	BLOCK	LOT

THIS MAP HAS BEEN GIVEN  
A FORMAL CERTIFICATION BY  
THE DIVISION OF TAXATION ON  
JUNE 14, 2022, SIGNED BY  
JESSICA LARNED AND  
LATOYA ROBERTSON AND  
ASSIGNED SERIAL NUMBER 1132

**TAX MAP**  
**BOROUGH OF ROOSEVELT**

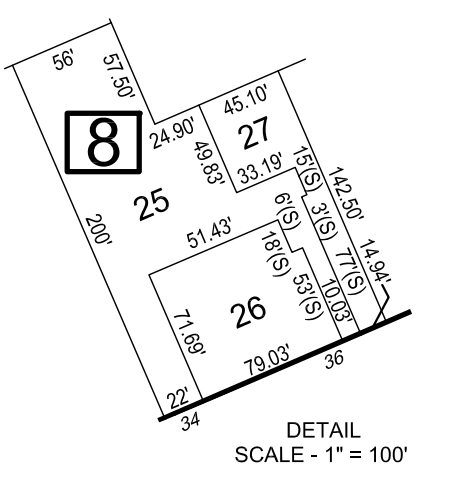
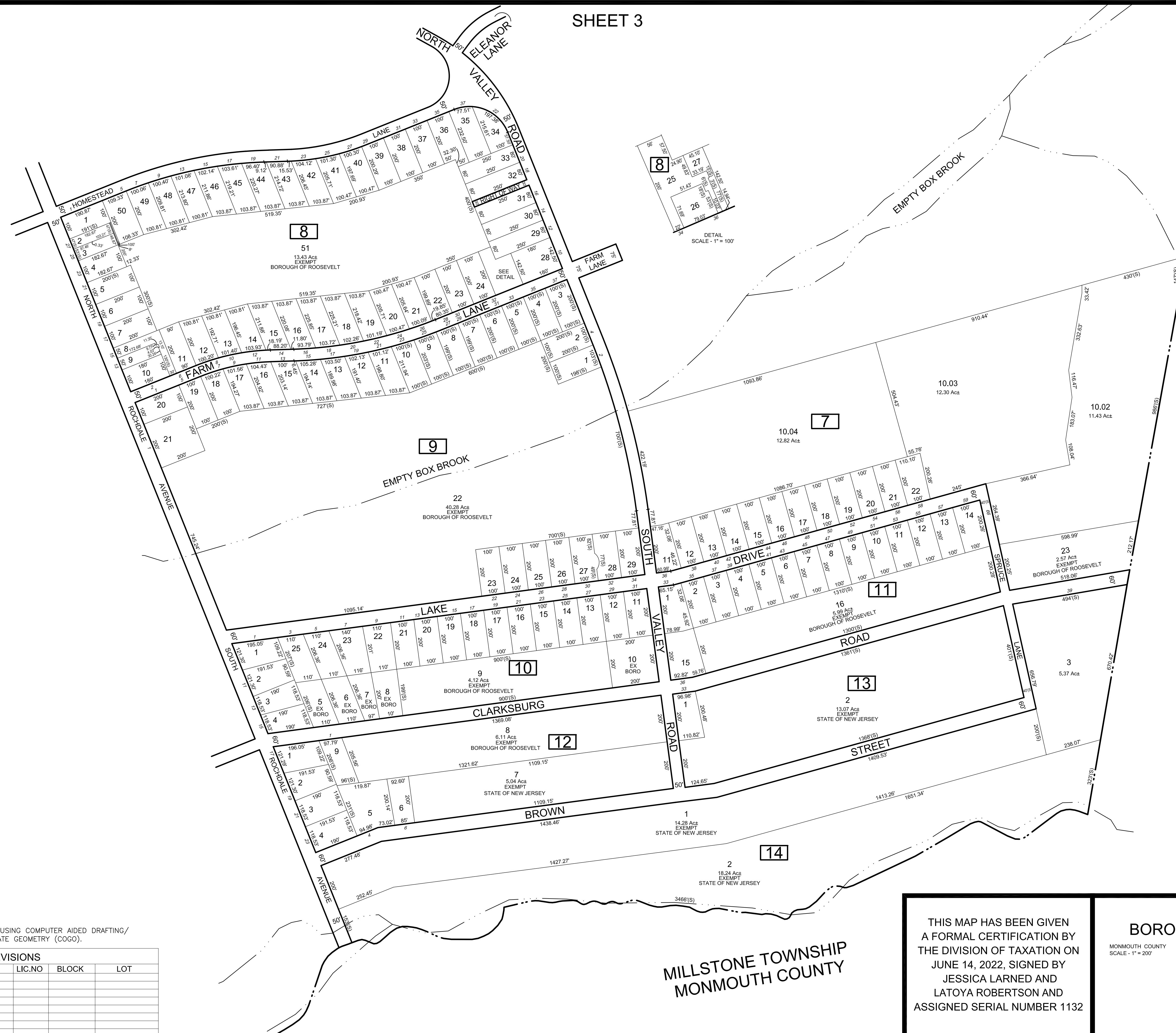
MONMOUTH COUNTY  
SCALE - 1" = 200'

NEW JERSEY  
DATE: JUNE 2022

**ERICK E. MUFF**

PROFESSIONAL LAND SURVEYOR  
NEW JERSEY LICENSE NO. 43372  
215 BELLEVUE AVENUE  
HAMMONTON, NEW JERSEY 08037  
COA# 24GA27973300

TO SHOW CONDITIONS AS OF JUNE 2022



\* THIS SHEET HAS BEEN DRAWN USING COMPUTER AIDED DRAFTING/ DESIGN (CAD/D) AND COORDINATE GEOMETRY (COGO).

REVISIONS				
DATE	BY	LIC.NO	BLOCK	LOT

MILLSTONE TOWNSHIP  
MONMOUTH COUNTY

THIS MAP HAS BEEN GIVEN A FORMAL CERTIFICATION BY THE DIVISION OF TAXATION ON JUNE 14, 2022, SIGNED BY JESSICA LARNED AND LATOYA ROBERTSON AND ASSIGNED SERIAL NUMBER 1132

**TAX MAP**  
**BOROUGH OF ROOSEVELT**  
MONMOUTH COUNTY  
SCALE - 1" = 200'  
NEW JERSEY  
DATE: JUNE 2022  
**ERICK E. MUFF**  
PROFESSIONAL LAND SURVEYOR  
NEW JERSEY LICENSE NO. 43372  
215 BELLEVUE AVENUE  
HAMMONTON, NEW JERSEY 08037  
COA# 24GA27973300  
TO SHOW CONDITIONS AS OF JUNE 2022

MILLSTONE TOWNSHIP  
MONMOUTH COUNTY